

19.4 and later ZEUS diagnostic tools use Windows[®] 10 embedded system software. Wi-Fi connection is controlled through the Windows operating system.

The Wi-Fi connection instructions shown here are intended for quick reference only. For Wi-Fi related instructions / troubleshooting that are outside the scope of these instructions, visit Windows online support.

Wi-Fi connection allows you to:

- Access the Internet using the Windows web browser.
- Use built-in ShopStream Diagnostic Suite Repair Information applications (e.g. Intelligent Diagnostics, SureTrack[®], Tire and Wheel Service, TSBs, Oil Specs and Resets, etc). **Note:** *Repair Information applications are not available on all models, are optional and vary by model.*
- Receive diagnostic software updates
- Receive important product messages.

Connecting to Wi-Fi

Note: *Whenever the diagnostic tool is turned on, Wi-Fi will automatically try to connect to a network.*

1. Turn on the diagnostic tool and allow Windows to bootup and the ShopStream Diagnostic Suite software to open.

After bootup, if Wi-Fi is not automatically connected you will notice the Wi-Fi icon in the Windows System Tray is grayed out with a star (this indicates Wi-Fi is not connected (Figure-1 left side).

If Wi-Fi is connected, the icon displays without a star (Figure-1 right side).

2. To connect to a network, click the Wi-Fi icon in the System Tray.

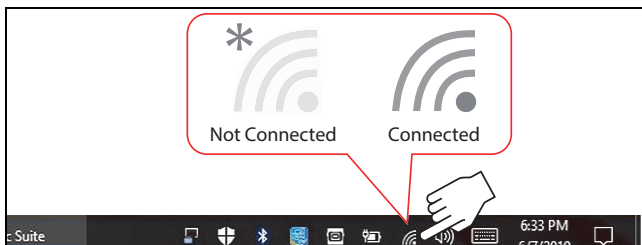


Figure 1

3. Choose your **Wireless Network** from the list of available networks, then select **Connect** (Figure-2).

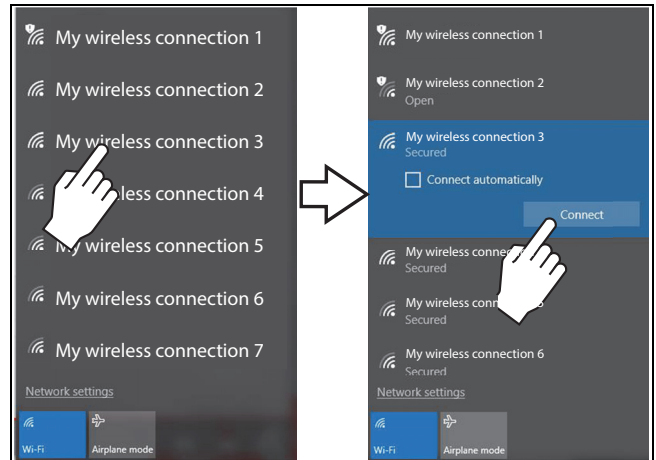


Figure 2

Note: *A password is required when choosing a protected network.*

A wireless network connection progress window displays as the connection is being made.

After the connection is successfully made, the Wi-Fi icon in the System Tray will display as Connected (Figure-1 right side).

Note: *Wi-Fi performance varies depending on your wireless network equipment and ISP.*

Note: *A Wi-Fi status icon is also provided on the Diagnostic Suite lower toolbar. This icon indicates connection status only and is not selectable (Figure-3).*



Figure 3