

# DO YOU NEED GARAGE EQUIPMENT

**Q1 | 2025 | PROMOTIONS | JANUARY — MARCH**



MOT



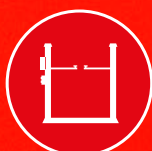
TYRE & WHEEL



ALIGNMENT



AC



LIFTS



COMMERCIAL



ADAS



EMISSIONS

# GARAGE EQUIPMENT

Q1 | 2025



**SUN<sup>®</sup> AUTOMATED TEST LANE**

**5-YEAR PRICE FREEZE FOR YOUR PEACE OF MIND**



Motor Clinic MOT and Inspection Centre



Mike Smith Cars Ltd



M & B Vehicle Services Ltd



KRK Motors

**FIND OUT MORE**



*Snap-on Finance available*



MOT



TYRE & WHEEL



ALIGNMENT



AC



LIFTS



COMMERCIAL



ADAS



EMISSIONS



# TYRE AND WHEEL MIX & MATCH

## STC5325-2S



## PACKAGE 1

The **STC5325** Tyre Changer is designed for a wide range of garage types, including general repair garages and multi-bay workshops, where higher productivity and speed are required.

- ❑ PROspeed™ technology adjusts turntable speed based on torque required to prevent bead damage
- ❑ The Pneumatic Bead Assist arm simplifies mounting and removal of low-profile and high-performance tyres by a single technician
- ❑ Outer clamping range of 10-22" and up to 28" with optional adapters (sold separately)

The **SWB100** Wheel Balancer is a compact, semi-automatic system ideal for general repair garages, enabling quick and efficient wheel balancing.

- ❑ Semi-automatic data entry automatically measures rim size and selects the correct balancing mode
- ❑ Split Weight Mode hides weights behind spokes for a more professional finish
- ❑ The quick nut wheel clamp securely attaches the wheel to the balancer shaft with ease

## SWB100



OR

## SWB200S



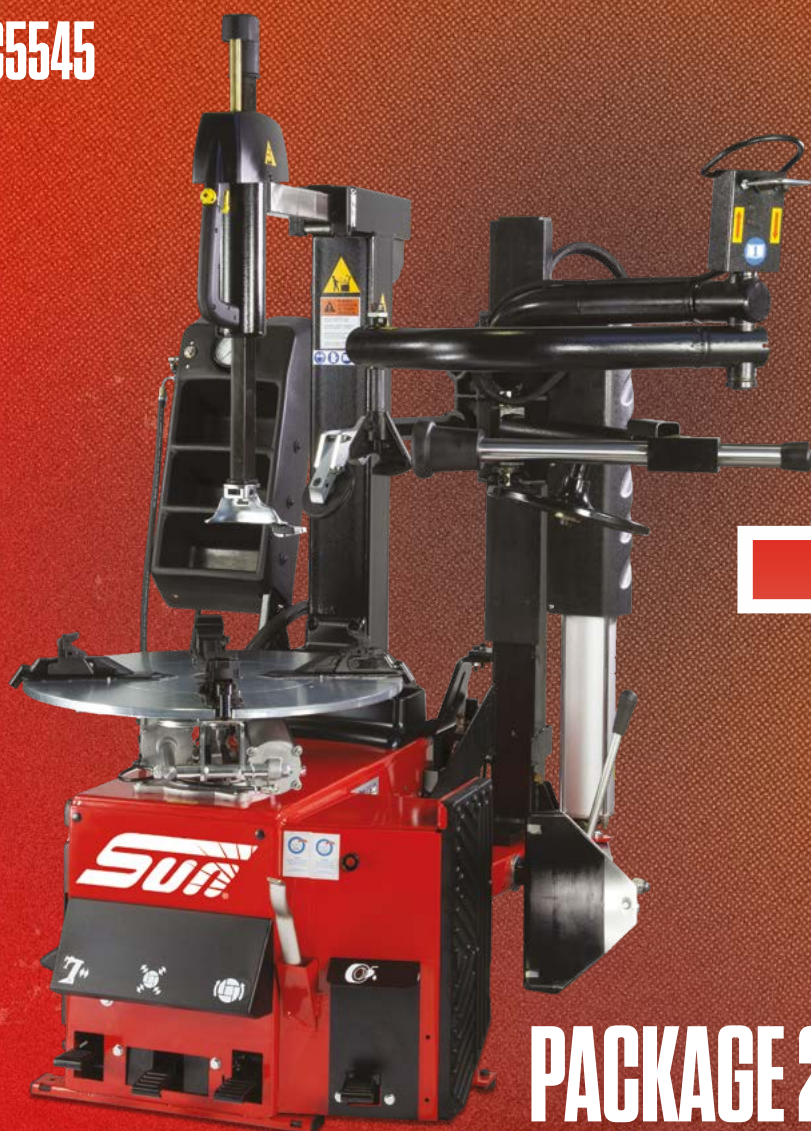
The **SWB200S** Wheel Balancer is a semi-automatic system with an integrated monitor. Ideal for independent garages and multi-bay workshops that need to improve productivity.

- ❑ Semi-automatic data entry with easyALU™, automatically measures rim size and selects the correct balancing mode
- ❑ Split Weight Mode hides weights behind spokes for a more professional finish
- ❑ SMARTSONAR™ detects rim width automatically, eliminating manual entry errors and saves time
- ❑ QUICKBAL™ reduces measurement cycle times by up to 30%

## IDEAL FOR INDEPENDENT GARAGES

## FIND OUT MORE

**STC5545**



**PACKAGE 2**

**SWB300L**



**OR**



**SWB340L**

The **STC5545** Tyre Changer is an advanced system designed for high-demand workshops, including multi-bay garages and tyre specialists, where speed and precision are essential.

- ❑ PROspeed™ technology adjusts turntable speed to prevent bead damage
- ❑ The Pneumatic Bead Assist arm simplifies mounting and removing low-profile and high-performance tyres by a single technician
- ❑ The low-profile cabinet height allows technicians to handle the bead lever at a lower height, applying more force to make light work of larger tyres
- ❑ Standard outer clamping range of 10-24" and up to 28" with optional adapters (sold separately)

The **SWB300L** and **SWB340L** Wheel Balancers are semi-automatic systems designed for workshops with higher wheel balancing demands.

A user-friendly interface and professional-grade features help technicians efficiently manage increased tyre servicing volumes while ensuring precise results.

- ❑ Semi-automatic data entry with easyALU™, automatically measures rim size and selects the correct balancing mode
- ❑ SMARTSONAR™ detects rim width automatically, eliminating manual entry errors and saves time
- ❑ QUICKBAL™ reduces measurement cycle times by up to 30%
- ❑ EASYWEIGHT™ eliminates guesswork by using a laser to show the exact weight placement position
- ❑ A touchscreen interface simplifies data entry and improves workflow (SWB340L only)

STC5545 image shown includes optional Plus Kit  
(Plus kit does not come as standard with the STC5545)

**ENGINEERED FOR HIGH-DEMAND  
TYRE SPECIALISTS**

**FIND  
OUT  
MORE**



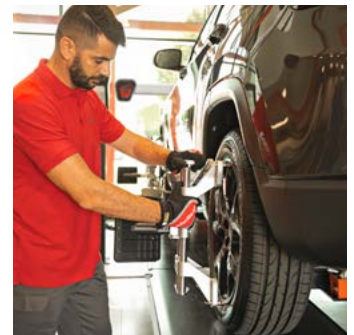
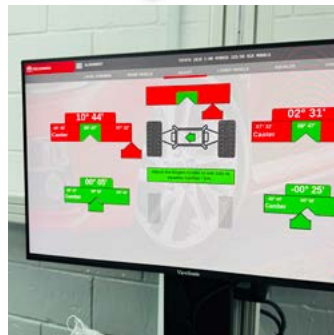
**John Bean**



# V2280

The John Bean® V2280 Wheel Aligner combines advanced technology with an intuitive interface for fast, accurate alignment. Designed for independent workshops, it streamlines alignment services, boosting revenue potential and efficiency without requiring extensive technician training.

- ❑ Vehicle Orientation Directional Indicators (VODI™) guides technicians through the alignment process
- ❑ Automatic tracking camera beam eliminates manual beam adjustments, saving valuable time
- ❑ Fast compensation and optimised workflow enhances productivity by eliminating unnecessary steps in the process
- ❑ Advanced Notification System detects and compensates for errors automatically, alerting technicians only when corrective action is required
- ❑ EZ-Toe simplifies steering adjustments without requiring a steering wheel holder



# GET THE WHEELS IN LINE!



# FIND OUT MORE

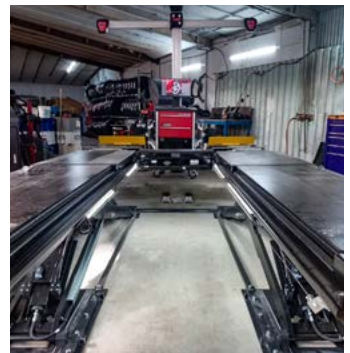
*Snap-on Finance available\**



# SSL-6400 ALIGNMENT SCISSOR LIFT

The SSL-6400 Alignment Scissor Lift is the ideal solution for busy workshops specialising in wheel alignment, including tyre centres, bodyshops, and collision and repair centres. Engineered with low-profile platforms and high planeness (ensuring a perfectly flat and stable surface), it guarantees precise wheel alignment on a wide variety of vehicles.

- ❑ Available in recess or surface-mount configurations
- ❑ Maximum rated lifting capacity of 4000kg
- ❑ Open front design for easy access to alignment and calibration points, plus gives clear visibility of the wheel alignment display
- ❑ Standard features include front turning plates, long rear slip plates, and integrated LED strip lights for illuminating inspection and adjustment areas



**GREAT COMBINATION  
WITH ANY ALIGNER!**



**PERFECTLY ALIGNED FOR SUCCESS!**

**FIND  
OUT  
MORE**



# 2-POST LIFTING

## SUN® 2-POST BASELESS LIFT



The SVL43 HBL 2-Post Lift is engineered to maximise floor space, making this lift ideal for a wide range of servicing and general repair tasks in most independent garages.

- ❑ Rated maximum lifting capacity of 4000kg
- ❑ Three-stage asymmetric lifting arms ensure a better centre of gravity for safe and efficient lifting of heavy EVs and front-wheel drive vehicles
- ❑ Low-profile arms with an 85mm pad height allow lifting vehicles with a low ride height, while included 55mm lifting adapters enhance versatility across most vehicle types

## SUN® 2-POST LIFT WITH BASEFRAME



The SVL43 2-Post Lift with Baseframe is engineered for workshops with height restrictions, featuring a compact design that optimises space while offering versatility for a wide range of servicing and repair tasks.

- ❑ Rated maximum lifting capacity of 4000kg
- ❑ Three-stage asymmetric lifting arms ensure a better centre of gravity for safe and efficient lifting of heavy EVs and front-wheel drive vehicles
- ❑ Low-profile arms with an 85mm pad height allow lifting vehicles with a low ride height, while included 55mm lifting adapters enhance versatility across most vehicle types



5000kg configurations also available for light commercial vehicles

**LIFT YOUR SERVICE & REPAIR POTENTIAL!**

**FIND  
OUT  
MORE**

*Snap-on Finance available\**



# WHAT OUR CUSTOMERS SAY



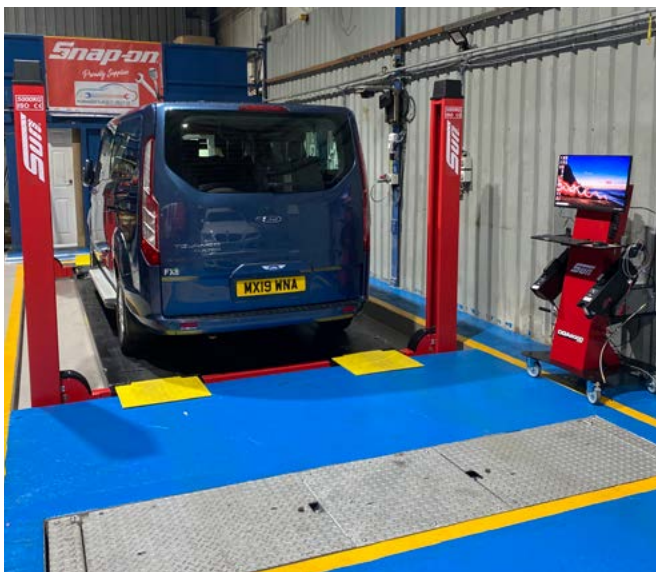
*“Gavin was informative and honest about the best equipment for our garage, suggesting useful add-ons to meet customer expectations and generate additional income. Delivery was prompt, a few days before installation. Marc, who installed the equipment, advised a better location for the machines to improve workflow. He also gave us a comprehensive demonstration of the tyre changer and balancing machines.”*

**SUN® STC5545 TYRE CHANGER AND SWB340L WHEEL BALANCER**  
**BEN — FOURTRAX AUTOMOTIVE LIMITED**



*“Ant was very knowledgeable about the product & it's benefits. He came out on the day the unit it was delivered, helped me set it up and ran through how the machine worked & also gave his number to help incase I had any further questions. Very professional!”*

**SUN® DUAL GAS 12 AIR CONDITIONING MACHINE**  
**CARL — GD MOTORS**



*“I made my purchase from my Snap-on Sales Representative after being referred to Nathaniel, who was incredibly helpful and kind. Everything went perfectly with the delivery, setup, and installation of my equipment!”*

**SUN® AUTOMATED TEST LANE**  
**ABDUL — KINGSFLEET AUTO SOLUTIONS LTD**



*“From the initial meeting with Chris, I felt very reassured about the whole process, from initial site drawings, documentation, installation right the way through to the final sign off. Without Chris' assistance and due diligence I would have struggled to complete the process alone.”*

**SUN® SSL-6350 OPTL**  
**NICK — TRAMWAY GARAGE LTD**





# KOOLKARE DUAL GAS 12



The KoolKare Dual Gas 12 is a fully automatic air conditioning service machine for the recovery, recycling, and recharging of both R134a and HFO1234yf gas vehicles. Futureproof your workshop with a single unit that services all vehicle types. The intuitive interface guides technicians through each step, while the automatic system boosts productivity by running autonomously, allowing technicians to focus on other tasks.

- ❑ Two gasses, one machine - Service all AC systems using R134a or HFO1234yf gasses, improving workshop efficiency and saving space
- ❑ Automatic system - Streamline the servicing process and save time by allowing technicians to start the process and step away to work on other jobs, making this an ideal choice for garages looking to optimise their efficiency
- ❑ Refillable hermetically sealed bottles - Eliminate moisture ingress and prevent oil and dye bottle contamination, ensuring a quality air conditioning service
- ❑ Comprehensive vehicle database - Built-in database with the ability to add new vehicles, ensuring efficient servicing of all customers' vehicles

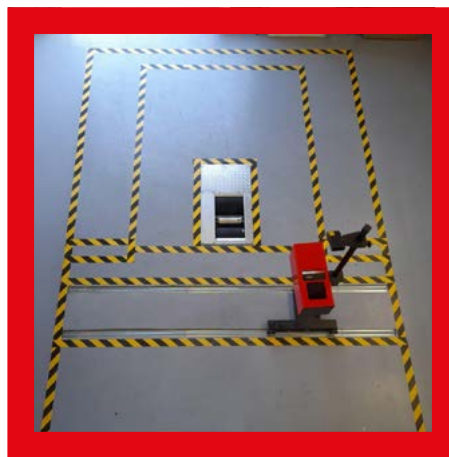


## A/C SERVICING, MADE SIMPLE



## FIND OUT MORE

# MOTORCYCLE MOT BAY



Expand your MOT capabilities with the SUN® Motorcycle MOT Bay. A complete stand-alone solution for MOT testing of Class I and II vehicles. This DVSA-approved solution offers a simple and user-friendly interface which provides technicians with quick and accurate results. Designed to meet the demands of a busy testing station.

- ❑ The SUN® roller brake tester has been developed to meet the latest DVSA regulations for MOT testing of class I and II motorcycles and motorcycle combinations
- ❑ Simplify your setup with a wired, wall-mounted analogue display. Its clear, easy-to-read format provides accurate results at a glance
- ❑ The brake rollers automatically stop when wheel slip occurs, and the analogue gauge clearly displays the maximum braking force achieved

- ❑ Standard package includes:
  - ✓ Motorcycle Roller Brake Tester with Analogue Display
  - ✓ Headlight Beam Tester
  - ✓ Wheel alignment bars
  - ✓ Motorcycle stand
  - ✓ Class I and II ancillary pack including decelerometer

**OPTIONAL ACCESSORIES AVAILABLE. SPEAK TO YOUR SNAP-ON® SALES REPRESENTATIVE FOR MORE INFORMATION.**



**EVERYTHING YOU NEED FOR MOTORCYCLE MOT TESTING**

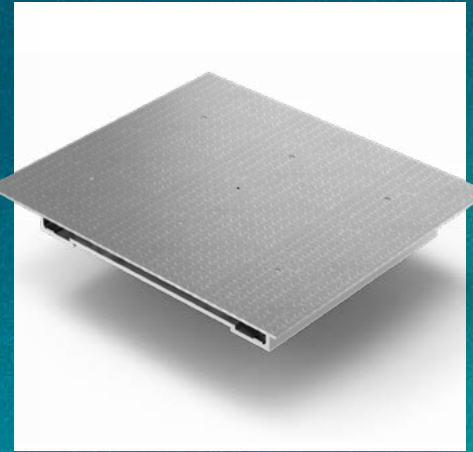


**FIND OUT MORE**



**HOFMANN®**

# COMMERCIAL ATF EQUIPMENT



The Hofmann® Commercial ATF lane is a DVSA-approved system, specifically designed to meet the demands of busy commercial testing facilities.

This versatile system is available in various configurations to match your workshop and pit layout. The standard system includes the Hofmann® BR-20 Roller Brake Tester with analogue display, geogas6000 LINK Emissions Analyser, Headlight Beam Tester, and Joint Play Detector.

■ **Brake Tester:** The Hofmann® BR-20 is a DVSA-approved Roller Brake Tester suitable for vehicle classes IV, V, and VII HGV and PSV up to 20 tonnes axle load. Additionally, the system can perform connected testing of class IV passenger vehicles and class VII light commercial vehicles. It is available in two configurations:

1. **Split System:** Split frame for pit installations
2. **Compact System:** Designed for ground installation away from the pit area

■ **Emission Analyser:** The Hofmann® geogas 6000 LINK is a DVSA-approved emissions analyser for vehicle classes III, IV, V, VL, and VII HGV and PSV. The system seamlessly integrates with the DVSA's MOT testing system, the emissions tester, the Hofmann brake tester, and decelerometer for vehicle classes IV, VL, and VII. Available in both "Combi", "Smoke" and "petrol" configurations. The user-friendly software interface guides technicians through testing procedures quickly and easily, streamlining your workflow and saving time.

■ **Headlight Beam Tester:** The Hofmann® DVSA-approved headlight beam tester for HGV/PSV vehicles is fully adjustable and includes a digital lux meter.

■ Its compact design requires minimal floor space, while robust construction and full adjustability ensure ease of use. It features a laser alignment visor for longitudinal alignment and a central lens laser pointer for precise height adjustment.

■ **Joint Play Detector:** HOFMANN® Wearthest 4600 FA Joint Play Detector: Designed for HGV and PSV vehicles with up to 20 tonnes axle load. Conduct thorough inspections of steering and suspension components for optimal vehicle safety.

**ACCESSORIES AVAILABLE**  
**SPEAK TO YOUR SNAP-ON®**  
**SALES REP FOR MORE INFO**

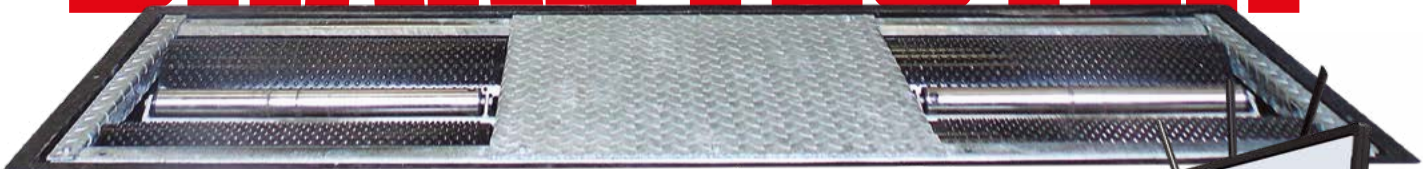
**FIND  
OUT  
MORE**

## MEETS THE LATEST DVSA ATF SPECIFICATIONS

*Snap-on Finance available\**



# BRAKE TESTER +



## HALF PRICE DGA 6000\*

Take emissions and brake testing to the next level with the SUN® Connected Roller Brake Tester and DGA6000 LINK Emissions Analyser. Built to last and engineered for busy testing stations, this integrated system boosts efficiency, reduces errors, and streamlines your MOT testing procedure. Seamlessly connect with the DVSA's MOT Testing System (MTS) to enhance the accuracy and reliability of every test.

- Approved for DVSA "connected" requirements: Connected MOT equipment is able to communicate directly with the DVSA's MOT Testing System (MTS) to improve testing accuracy and efficiency
- The battery-powered petrol and diesel modules are wireless, eliminating the hassle of unwinding and coiling a long hose before and after each test. They are always heated and ready for measuring, improving testing efficiency
- The software interface guides technicians through testing procedures, plus the EOBD dongle makes oil and RPM measurements simple
- The Roller Brake Tester is available in two roller configurations: 700mm rollers that have a drive-over capacity of up to 4000 kg and can be used for MOT Class I, II, III and IV, or 1000mm rollers that have a drive capacity of up to 6000 kg and can be used for MOT class, I, II, III, IV, VL and VII (class I and II require optional adaptor plate)
- The dimpled roller surface is designed to offer protection to tyres while giving a feel similar to the road surface, allowing for accurate and repeatable results wet or dry. The roller brake surface includes a 10-year warranty
- ODB Health-check, automatically identifies emissions-related pending codes during testing, use this feature to recommend repairs to your customers before they become a problem



### STREAMLINE YOUR MOT PROCESS



### FIND OUT MORE



# EZ-ADAS™ RECALIBRATION SYSTEM



Advanced Driver Assistance Systems (ADAS), commonly referred to as drivers' aids or safety systems, are not coming — they are already here! ADAS creates new challenges for repair centres of all kinds. Even seemingly simple repairs can result in the need for sensor recalibration.

The SUN® EZ-ADAS™ Recalibration System is an innovative collection of precision tools with cutting-edge design. The system features a unique, fast and precise centerline setup, based on OEM procedures, with easy-to-follow instructional steps that equip you to tackle even the most complex ADAS calibrations confidently.

- ❑ The entire guided recalibration procedure involves just a few simple steps—up to 40% fewer than most commercially available systems—leading to significantly enhanced productivity
- ❑ The system works hand-in-hand with Snap-on® diagnostic tools and the latest software, giving you market leading ADAS coverage\* with the information you need to complete the job right the first time
- ❑ EZ-ADAS™ is designed to eliminate errors in the recalibration process. Our high-accuracy laser positioning and unique target placement ensure that technicians position targets in OEM-specified locations with greater precision
- ❑ The EZ-ADAS™ App gives exclusive access to step-by-step instructional videos, target placement guides, and OEM data—all at your fingertips.



\*See website for more information. †Off list price.