

**Snap-on**

YOUR OFFICE. YOUR DELIVERY VEHICLE.  
**YOUR STORE.**



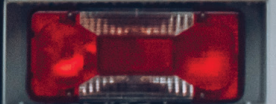
**Snap-on®**



**SNAPON.CO.UK**

**FRANCHISES AVAILABLE**

ALCO



**KURT HOBBS  
COACHWORKS LTD**

COACHWORKS LTD

COACHWORKS LTD

New Daily	2-3
Enjoy safe, stress free driving	4-5
- Avoid Collisions with AEBS and City Brake PRO	5
- Cruise safely on the motorway	5
- Always stay in your lane	5
On-board living and driving experience	6-7
Technology at your service	8-9
- Safety and Efficiency with real-time tyre pressure monitoring	8
- Easy, clear interaction	8
- Superior driving comfort and ergonomics	9
- Hi-Connect: the new infotainment system	9
Inside your mobile store	10-17
- Cab Features	11
- Electrical Control Panel	12
- Workstation and Front Bulkhead	12
- Electrical Equipment	13
- Off-side	14
- Near Side	15
- Tail Lift, Rear Door and Near Side Door	17

UK





**Snap-on®**

WER TOOLS...

SPECIALITY TOOLS...

**SHOP EQUIPMENT...**

**S**

**S**

VENTHO  
HYDRA-MATIC

AGILE



## NEW DAILY

# THE VEHICLE THAT WILL CHANGE YOUR BUSINESS PERSPECTIVE

Once again, the Daily is ahead of the pack, anticipating your needs to future-proof your business. The Daily has undergone a revolutionary evolution that will change your business perspective forever.

In a fast-changing world where automation plays an increasing role, the Daily makes great progress on the path towards autonomous driving and in enhanced safety features.

The Daily is a driver's vehicle: when you spend the majority of your working day behind the wheel, you want your on-board living conditions and driving experience to be second to none. Throughout its 40-year history, the Daily has continuously made advances to always provide a first-class environment. True to its heritage, it raises your living and driving experience to the highest levels in the industry.

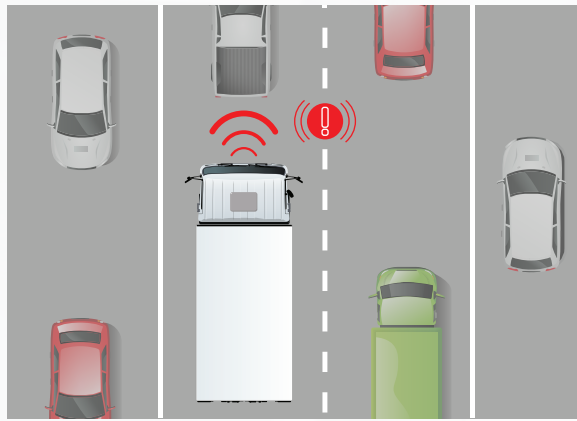
The Daily embraces Connectivity to unlock a whole new world of highly personalised services precisely tailored to match your use of the vehicle and your requirements.

It truly is your complete transport solution, custom-made for your business.

# ENJOY SAFE, STRESS-FREE DRIVING

The Daily makes significant advances on the path towards autonomous driving and safety with the introduction of a complete set of Advanced Driver Assistance Systems. These advanced technologies are at your service: they enable you to fully focus on your job, which requires an increasing degree of multitasking, in full safety. They reduce the risk of accidents on motorways and busy city streets, help you in tricky situations and take the stress away in heavy traffic – improving quality of life on board and of your business.

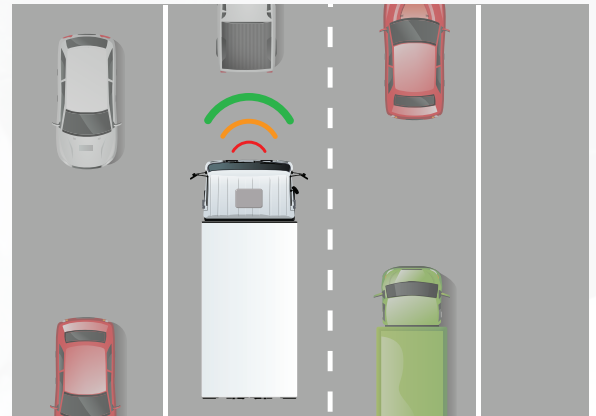




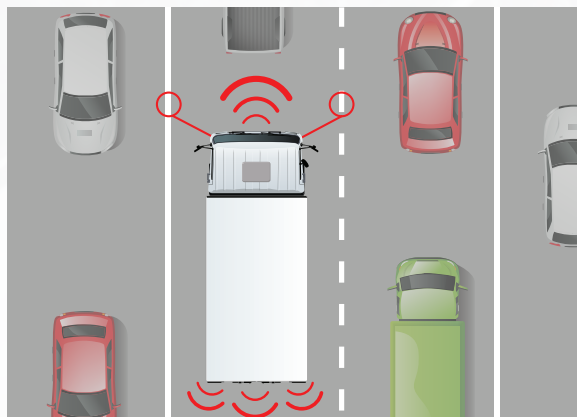
## AVOID COLLISIONS WITH AEBS AND CITY BRAKE PRO

The Advanced Emergency Braking System (AEBS) helps keep you safe by detecting a potential collision ahead and braking autonomously. It prevents collisions at speeds below 50 km/h, and drastically mitigates the damage at greater speeds. In busy traffic, the City Brake PRO, will help you to also avoid collisions at speeds as low as 5 km/h. Both systems offer three settings, which can be selected by the driver on the steering menu. Fleet Managers have the option to set and lock the function's settings

## CRUISE SAFELY ON THE MOTORWAY



It can be difficult to stay alert during long drives on motorways; Adaptive Cruise Control helps you stay safe. You set your cruising speed and minimum distance from the vehicle ahead. If the vehicle in front slows down, the system reacts and autonomously reduces your speed to maintain the safety distance until the other vehicle moves away or speeds up.



## ALWAYS STAY IN YOUR LANE

The Daily also helps you stay in your lane with the Proactive Lane Keeping Assist system, which gently steers you back to the centre of the lane if you drift out. You can set the distance you wish to keep from the painted lane marking and the stroke intensity on the steering system.







# ON-BOARD LIVING AND DRIVING EXPERIENCE

70% steering effort reduction with the new Electric Power Steering and City Mode.

15% better visibility and obstacle perception with LED lights.



# TECHNOLOGY AT YOUR SERVICE

The Daily uses technology to provide a superior driving experience and the perfect working environment. Life on board is easier, more comfortable and more productive than ever.



## SAFETY AND EFFICIENCY WITH REAL-TIME TYRE PRESSURE MONITORING

The Tyre Pressure Monitoring System displays the pressure of each tyre in real time on the cluster, so you can ensure your Daily is always running on optimal tyre pressure. This not only results in safer driving, but also helps you reduce your fuel consumption. The Daily is the first vehicle in its class to offer this feature for both single and twin-wheel models.



## EASY, CLEAR INTERACTION

The new high-resolution colour display cluster provides a user-friendly, intuitive interface that makes it extremely easy to interact with your Daily and access in real time all the key settings and information you need to get the best from your vehicle.

## SUPERIOR DRIVING COMFORT AND ERGONOMICS

The Daily's entire steering system has been redesigned to give you the on-board living experience of a passenger car. You can make both axial and angular adjustments to the steering wheel and set up the perfect driving position for better comfort and ergonomics. The smaller, leather multifunctional steering wheel puts a wide range of controls at your fingertips and leaves more leg room, adding to your overall comfort.



## HI-CONNECT: THE NEW INFOTAINMENT SYSTEM

The Daily features a user-friendly infotainment system with a 7" screen, DAB radio, Driving Style Evaluation, voice recognition, TomTom® car and truck navigation system, and rear camera display.

You can easily bring your digital life on board with Apple CarPlay and Android Auto™, which enable you to mirror your device and enjoy your apps in full safety while driving.



# INSIDE YOUR MOBILE STORE

Your Snap-on Mobile Store comes fully fitted out with a bespoke interior supplied by our partner company LDV, and built by our partner coach builders Kurt Hobbs, designed to maximise every inch of selling space within your store to ensure your customers have the best buying experience possible.



# CAB FEATURES:

## INTERIOR

- 3 seat cab (driver + 2 passengers)
- Driver's suspension seat with adjustable springing rate, lumbar support and arm rest
- Cloth seats with headrests
- Flame resistant interior materials
- Air Con
- 3-point seat belt on Driver's seat and all passenger seats
- Adjustable steering wheel (reach and rake)
- Grab handles
- Vinyl floor covering
- Glove box
- Satnav
- Electric driver's side and passenger side windows
- 12V power socket
- Central courtesy light
- Dash Cam
- Bluetooth

## INSTRUMENTS AND CONTROLS

- Multifunction electronic display screen (fuel-consumption, trip, status, time, Gear indicator, Odometer, Maintenance info)
- Speedo in mph (and km/h)
- Fuel Gauge
- Rev counter with economy band
- Electric window switches in door panels
- Lighting and indicator control stalk
- Heater controls
- Steering wheel mounted horn switch
- Interior lamp switch on head lining
- Digital Tachograph (2 man)
- Central locking dash control

## SECURITY

- Engine Immobiliser
- Keyless remote central locking
- 3 door storage compartment per door

# ELECTRICAL CONTROL PANEL

- Battery guard reset
- 12V outlet
- Combined inverter charger control
- Switched unit
- Nearside shelving lights
- Offside shelf lights
- Roof lights
- Spare
- 12V Test Station
- Battery Voltage display
- Heater control – New Feature
- 4 x 240v switched sockets
- AC
- 12V switch for test station, TV and Voltmeter



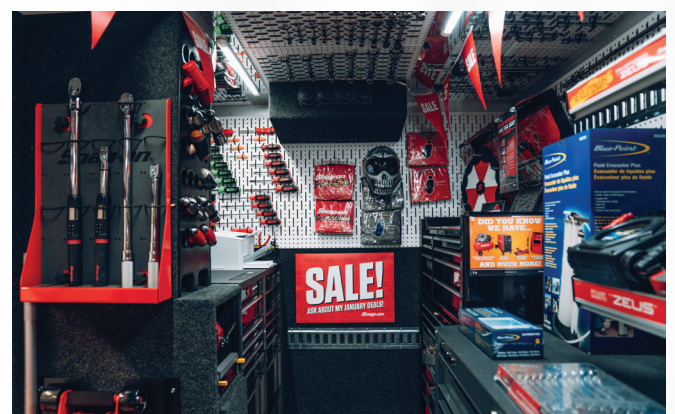
## WORKSTATION AND FRONT BULKHEAD

- Air Con Unit
- Electrical control panel
- Hammer Rack
- Workstation with vice, 14 drawer and work surface
- Torque wrench and jack display mounted to Hammer Rack
- Heavy Duty lacing and peg board



# ELECTRICAL EQUIPMENT

- 5 x LED roof lights
- 10 x LED shelf lights
- Inverter/ charging system to provide 230v during the day and charge the batteries at night
- Mains hook-up facility to condition batteries at night for optimum life and performance
- Air Con
- Mains hook-up lead and mains adapter supplied
- Battery guard to protect against low battery voltage (in case of equipment being left on)
- Night heater system 2KW power rated with thermostat
- 31" flat-screen monitor with external USB
- 12V Test Point Ports
- 12V Leisure Socket
- Voltmeter
- 2 x 230V test socket
- Split charging system (to charge batteries when engine is running)
- Reversing camera
- Dash cam





## OFF-SIDE

- 5 rows of carpeted fixed shelving
- Oversize Storage drawer under shelving
- Floor rings
- LED shelf lights
- 119" Toolbox storage area
- Aluminium floor plate
- 3 x E-Track and foam rub rails
- Heavy duty lacing and peg board
- Rear door features hooks for product display
- Two display draws
- 2x 50" Removable E-Track shelves
- 2 x 23" Removable E-Track Shelves
- Rear Door – Cordless display
- Two display draws







## NEAR-SIDE

- Air Tools display rack
- Oversized storage drawers under shelving
- 2 display/stock drawers
- 5 rows of carpeted fixed shelving
- Heavy Duty lacing and peg board
- LED shelf lights
- Large item storage with E-Track at rear
- Floor rings
- 31" TV & Diagnostic display





Diagnostics

Snap-on

5

5

## TAIL LIFT

- 2.1 meters deep for easier tool storage loading and unloading
- Foot controls, kicks plates and flashers



## REAR DOOR

- Secure locking system
- Stainless steel retainer/hinges
- Buffers for tail lift platform
- Mains hook up socket



## NEAR SIDE DOOR

- Sliding Door
- High-security shoot-bolt locking system engaged via vehicle alarm system
- Additional manual key lock
- Fixed-step built into door aperture

The Snap-on logo is rendered in a stylized, italicized font with a metallic, three-dimensional appearance. The letters are dark with a lighter, reflective highlight on the top and left edges, giving it a sense of depth and industrial strength. A small registered trademark symbol (®) is located at the end of the word.

**Snap-on®**

**WWW.SNAPON.COM**